


7.1.4



**KAMMAVARI SANGHAM (R) - 1952**  
**K. S. INSTITUTE OF TECHNOLOGY**  
 ( Approved by AICTE, New Delhi; Affiliated to VTU, Belagavi, Karnataka; Accredited by NBA & NAAC )  
**#14, Raghuvanahalli, Kanakapura Road, Bengaluru - 560109**  
 Tel: 080-28435722 / 24      Web : www.ksit.edu.in

### 7.1.4 MAINTAINANCE OF WATER BODIES AND DISTRIBUTION SYSTEMS IN THE CAMPUS



*S. Kumar*  
**PRINCIPAL**  
**K.S. INSTITUTE OF TECHNOLOGY**  
**BENGALURU - 560 109.**



# KAMMAVARI SANGHAM (R) - 1952 K. S. INSTITUTE OF TECHNOLOGY

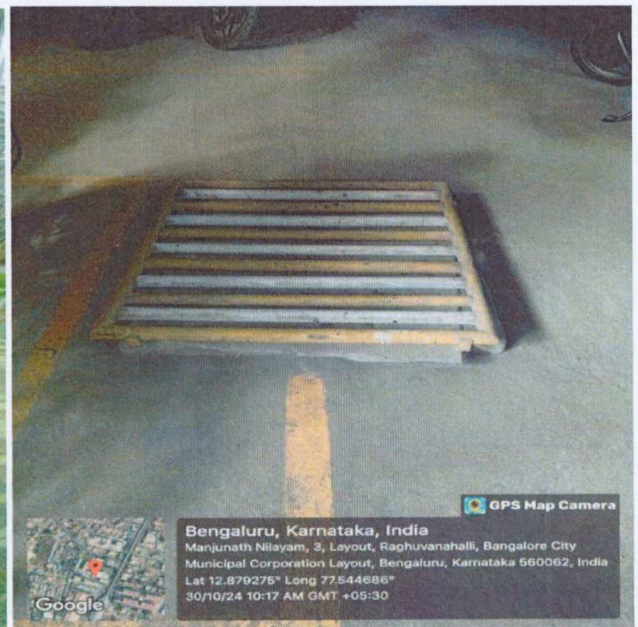
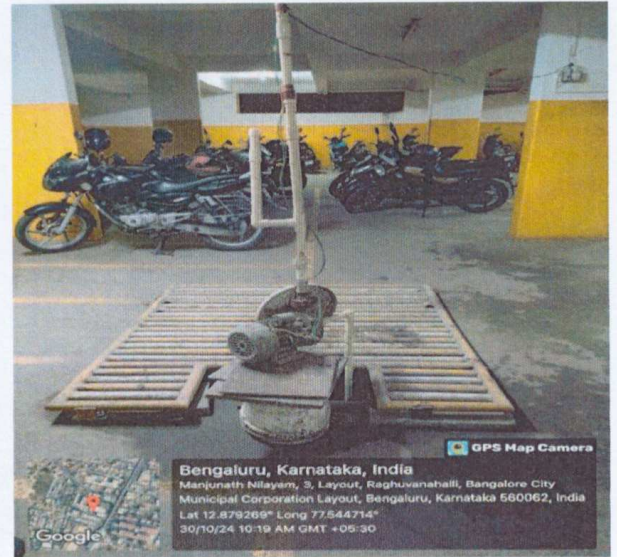
( Approved by AICTE, New Delhi; Affiliated to VTU, Belagavi, Karnataka; Accredited by NBA & NAAC )

#14, Raghuvanahalli, Kanakapura Road, Bengaluru - 560109

Tel: 080-28435722 / 24

Web : www.ksit.edu.in

## 7.1.4 BORE WELL RECHARGE



*Shunna. L*

PRINCIPAL  
K.S. INSTITUTE OF TECHNOLOGY  
BENGALURU - 560 109.



**KSIT**  
K.S. INSTITUTE OF TECHNOLOGY

**KAMMAVARI SANGHAM (R) - 1952**

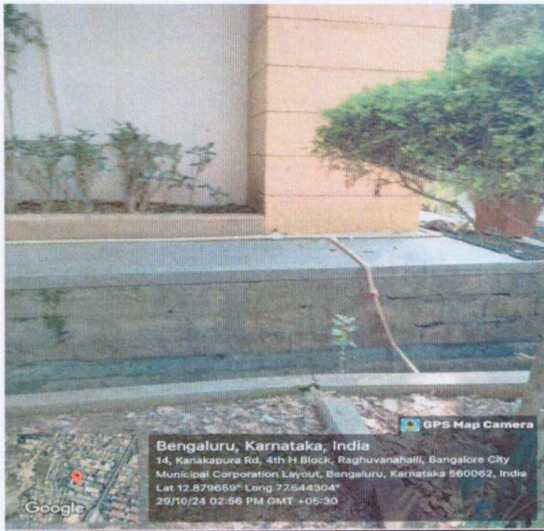
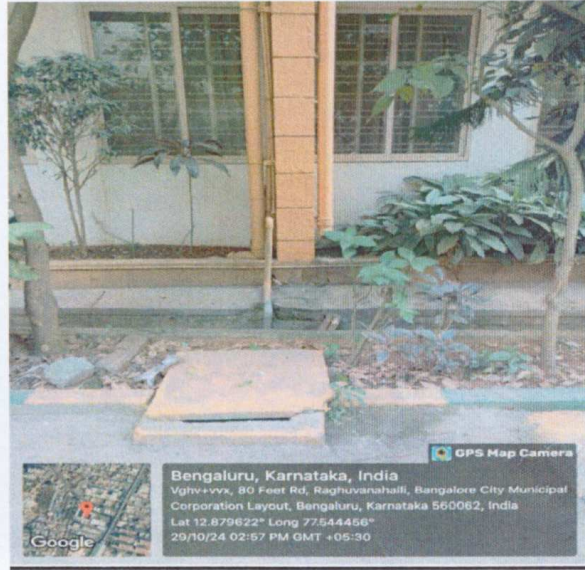
# K. S. INSTITUTE OF TECHNOLOGY

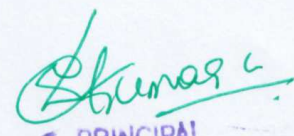
( Approved by AICTE, New Delhi; Affiliated to VTU, Belagavi, Karnataka; Accredited by NBA & NAAC )

**#14, Raghuvanahalli, Kanakapura Road, Bengaluru - 560109**

Tel: 080-28435722 / 24      Web : [www.ksit.edu.in](http://www.ksit.edu.in)

### 7.1.4 ROOFTOP RAINWATER HARVESTING RECHARGE PIT



  
 PRINCIPAL  
 K.S. INSTITUTE OF TECHNOLOGY  
 BENGALURU - 560 109.